



Two-cylinder smoothness rated at a comfortable 3000-rpm...



12C Two Marine Diesel Engine

Lightweight and Compact

The 12C Two has one of the smallest available envelopes in the Westerbeke line. This lightweight, low profile engine is designed to fit into the smallest of engine compartments.

Powerful and Reliable

The 12C Two is a powerful, two-cylinder engine rated at a comfortable 3000-rpm. Specially engineered by Westerbeke, pioneers in marine diesel engines, the 12C Two provides consistent performance, durability and, above all, reliability year after year.

Easy Operation and Maintenance

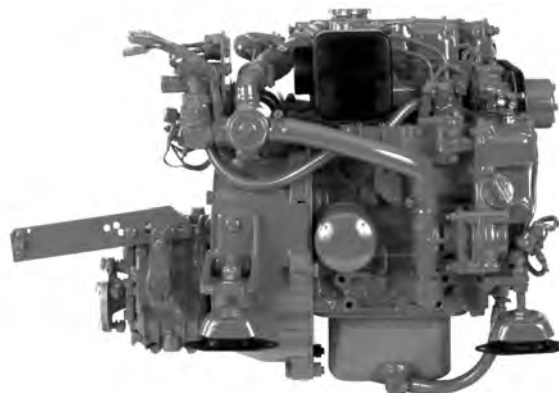
To minimize engine maintenance, the 12C Two is fresh water-cooled and equipped with a simple control system. Easy access to all servicing points and a self-bleeding fuel system allow easy routine maintenance. The 12C Two is easy to install, economical to operate and has a full range of options available allowing you to custom tailor your engine.

Full Engine Instrumentation Option

Westerbeke offers an optional admiral panel. The admiral panel includes, tachometer, hour meter, volt-meter, water temperature and oil pressure gauge. Westerbeke also offers an optional captain panel with tachometer, hour meter, and warning lights.

The Name You Can Trust

The presence of Westerbeke in over 65 countries around the world provides customers with easy access to parts, service and technical support worldwide. Established in 1937, Westerbeke is committed to providing its customers with quality products and unequaled after sales support.



12C Two Marine Diesel Engine

Standard Features

- Fresh water cooling
- Engine pre-wired to plug-in connector
- Self-bleeding fuel system
- 12 volt, 50 amp alternator
- Flow control domestic hot water connection
- Coolant recovery tank
- Throttle, stop, and shift control brackets
- Low oil pressure and high water temperature alarms
- Gear driven raw water pump
- Mechanical gear with 2.05:1 reduction
- Glow plug cold starting aid
- Four point adjustable flex mounts
- Lube oil drain hose
- Tuned air intake silencer
- Operators' manual and parts list
- EPA, CARB & CE compliant



Optional Admiral Panel

Admiral Panel Dimensions

| | |
|--------|------------------|
| Length | 9.75" (247.7 mm) |
| Depth | 4.0" (101.6 mm) |
| Height | 6.0" (152.4 mm) |

Performance Data

Horsepower and rpm

12 hp @ 3000 rpm

Maximum torque and rpm

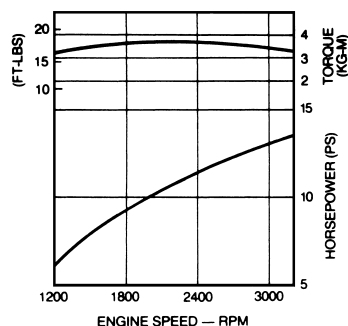
30 lbs/ft @ 2200 rpm

Typical fuel consumption

0.056 US gal/hp/hr
(0.212 liters/hp/hr)

Typical fuel consumption

@ 2500 rpm
0.7 US gal/hr
(2.65 liters/hr)



Specification

| | |
|--|--|
| Number of cylinders | 2 Cylinder vertical in-line |
| Cycles | 4 Cycle |
| Displacement | 38.75 cu. in. (.63 liter) |
| Bore and stroke | 2.99" x 2.76" (76 mm x 70 mm) |
| Compression ratio | 23:1 |
| Maximum angle of installation | Not to exceed 14° |
| Maximum angle of operation | Not to exceed 25° |
| Crankshaft, direction of rotation | Counterclockwise as viewed from flywheel end |
| Propeller shaft, direction of rotation | Right hand – std. trans. |
| Dry weight | 225 lbs (102.1 kilos) |
| Combustion system | Swirl type |
| Aspiration | Naturally aspirated |
| Lubrication system | Forced lubrication by gear pump |
| Cooling system | 2.9 quarts (2.7 liters) |
| Starting aid | 12 volt sheathed type glow plug |
| Engine stop | Manual Type |
| Fuel injection pump | Bosch type |
| Governor | Centrifugal type |
| Injectors | Throttle type |
| Fuel filter | Secondary, replaceable type |
| Lube oil filter | Full flow, spin-on element |
| Lubricant capacity | 0.634 US gal (2.4 liters) |
| Fuel transfer pump | Mechanical diaphragm type |
| Fuel supply and return piping | 1/4" ID (6.35 mm) minimum 3/8" ID (9.65 mm) maximum |
| Starting motor | 12 volt, solenoid, actuated shift |
| Battery charging alternator | 50 ampere (12 volts) |
| Cold cranking amps | 125 amps |
| Alternator/regulator | Automatic, solid state built-in |
| Electrical system | 12 volts DC, negative ground |

Construction – Engine Components

| | |
|------------------|--|
| Cylinder head | Cast Iron |
| Cylinder block | Cast Iron |
| Crankshaft | Forged crankshaft, three main bearings |
| Valves | Overhead valves, rotating type |
| Fuel System | Self bleeding |
| Intake system | Tuned intake silencer for maximum noise reduction |
| Cooling system | Fresh water-cooled with tube and shell type heat exchanger |
| Exhaust manifold | Cast aluminum, fresh water-cooled with built-in expansion tank |

Standard Equipment

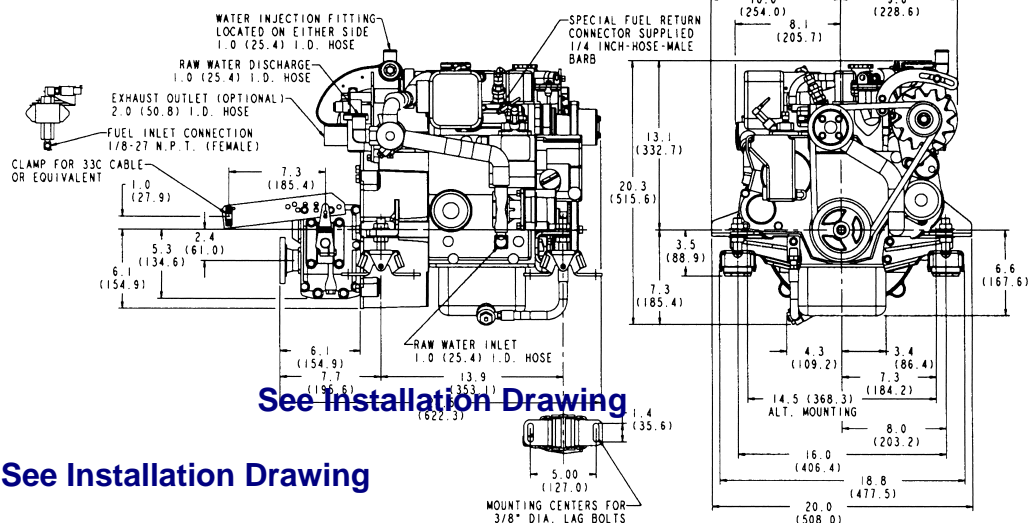
| | |
|---|----------------------------------|
| Standard gear ratio | 2.05:1 |
| Mounting centers | 14.56" |
| Flexible mounts | Adjustable fail-safe rubber type |
| Flow control domestic hot water connection | |
| Coolant recovery tank | |
| Battery charging alternator | |
| Starting aid | |
| Control brackets | For all control attachments |
| Prewired Engine | |
| Gear-driven sea water pump | |
| Lube oil drain hose | |
| Tuned air intake silencer | |
| Oil fill | Top and service side |
| Circuit breaker protected electrical system | |
| Operator's Manual | |
| Parts List | |

Optional Equipment

| | |
|---|---------------------------|
| Captain panel with alarm (tachometer with lights) | |
| Admiral panel with alarm (tachometer with gauges) | |
| Dual station senders | |
| Other gear ratios | Consult local Distributor |
| Remote expansion tank | |
| Fuel/water separator | |
| Muffler and fittings | |
| "A" on board spare parts kits | |
| "B" extended cruising spare parts kits | |
| Anti-siphon valve for overboard cooling discharge water | |
| Technical Manual | |
| Exhaust connection (water injected 90°, 45° elbows & riser) | |
| Propeller shaft couplings (rigid/flexible) – available standard sizes | |

Dimensions

Inches (millimeters)



Authorized Dealer